

## Snowshoeing

Learning to snowshoe is a blast! At Up Yonda you will hear about the creation of snowshoes and the history of the sport, then it is off to try it yourself as you are led on a hike around the property. Snowshoeing may be booked in January or February. **These programs are weather dependent, so call ahead for conditions.**



## Maple Sugar Basics



In March, come discover the craft that has become a legend in the northeast. As the sun begins to warm the trunks of sugar maple trees, sap starts to flow. This marks the start of the sugaring season in the Adirondacks. Join us for Maple Sugar Basics and learn about this fascinating process. We'll tap, collect, and boil sap and discuss all the steps to get from sap to syrup.

Maple Sugar Basics is a popular program, so it is a good idea to sign up early!

## Discover Your Natural Heritage

April at Up Yonda Farm is *Natural Heritage* month. The topics covered include our New York State symbols and their meaning, as well as the natural formation of our state's mountains, lakes and rivers. The program lasts 90 minutes and is most suited for students in grades 3-7.

New York's State bird,  
the Eastern Bluebird



## Make a Splash with Aquatic Adventure

May means *Aquatic Adventure* at Up Yonda Farm! Discover all of the animals that live in and around our pond and learn to identify them. See how the insects, fish, turtles and plants depend on each other in a food chain, as we build a pond together. Students will be around the pond and have an opportunity to handle live aquatic animals, so please dress appropriately.

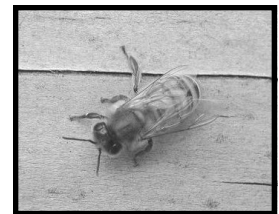


A Young Painted Turtle

## Catch the Buzz About Pollinators

In June, the spring flowers are in full bloom and that means the *Pollinators* will be out in full force. Up Yonda invites you to come take a closer look at the lives of the fascinating honey-bee. What makes a bee a bee? Find out as you learn about the body parts of an insect. You will also explore the roles of the different bees in the hive and find out how bees are beneficial for people and other animals. Students will even get to see inside a real working beehive and meet one of our beekeepers.

A female honeybee  
called a worker



== = = = = = = = = = = = = = = =  
" School programs are booked at 10 AM or 12PM ||  
" and last 90 minutes. To book a program for " ||  
" your class, contact Up Yonda Farm at " ||  
" (518) 644-9767 or visit our website at " ||  
" [www.upyondafarm.com](http://www.upyondafarm.com). " ||  
" == = = = = = = = = = = = = = = =

# SCHOOL NATURE PROGRAMS AT UP YONDA FARM

Nature programs at Up Yonda Farm can be a great supplement to the classroom education received by your students. The programs we offer tie in well with New York State core curricula and give the students an opportunity to learn in a very hands-on environment. School programs are generally booked Monday through Friday at 10 AM or 12PM and last about 90 minutes. The fee for our nature programs is \$4 per person, including students, teachers and chaperones. All of our programs are offered rain or shine and in the case of poor weather, the program would be altered to include mainly indoor activities.

**To book a nature program for your class, contact Up Yonda Farm by phone at (518) 644-9767 or visit our website at [www.upyondafarm.com](http://www.upyondafarm.com).**

---

---



## Migrate to UpYonda



When September arrives, Monarch butterflies are leaving. Do you know where they go? Learn about this fascinating insect and its annual migration. Discover the life cycle and body parts of butterflies and help a naturalist tag and release Monarchs as part of the Monarch Watch Program. (Monarch Watch is an organization at the University of Kansas who keep tabs on the Monarch population and migration.)

## Changing Trees

October means the Adirondacks are alive with beautiful fall foliage and time for *Changing Trees* at Up Yonda. Explore woodland trails as you learn about the parts of a tree, learn to identify common local species and discover why trees are an important natural resource for humans and wildlife.



## Ready or Not - Here Comes Winter

When winter comes, animals need to be prepared to cope with cold temperatures and snow. In November, come learn about animal survival skills including; migration, hibernation, dormancy and adaptation. This program features exciting wildlife exhibits in our natural history museum as well as a guided hike to look for animal activity.



## Astronomy - Starlab (Indoor Planetarium)

Come learn how to identify some of the constellations in our winter sky and hear about the mythology behind them. You will become familiar with star patterns, their names and locations, and even how they are created. Students will spend time inside the inflatable planetarium and visit our museum to learn more about our solar system. (Starlab may be booked in December or January.)

